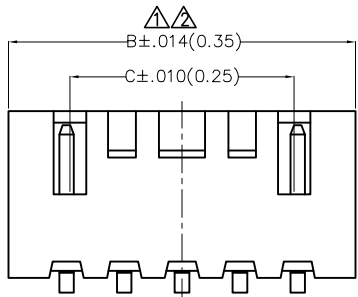
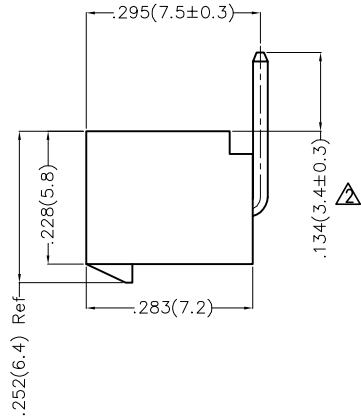
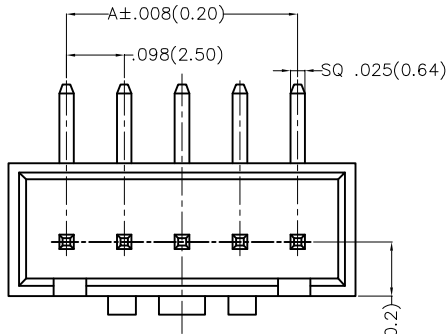
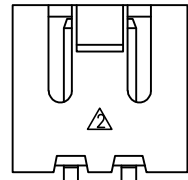


1 2 3 4 5 6 7 8

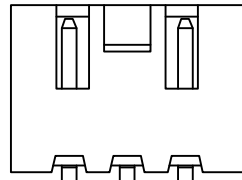
REV	LOCATIONS	DESCRIPTION	DATE	REVISER	APPD
1	△	Dimensional tolerance change	08/MAY/21	KATE	CHERRY
2	△	1:Update the structure of 2Circuits 2:Update dimensions and tolerances 3:Increase the value of "C"	14/DEC/23	MATT	LEO



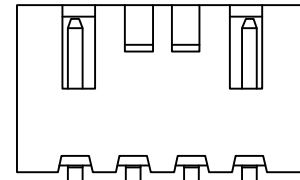
5-13Circuits



2Circuits



3Circuits



4Circuits

Electrical

Current Rating: 3.0A AC(rms)/DC  
 Voltage Rating: 250V AC(rms)/DC  
 Contact Resistance: 20 mΩ Max  
 Insulation Resistance: 1000 MΩ MIN  
 Withstanding Voltage: 1000V AC r.m.s  
 Temperature Range—Operating: -25°C ~ +85°C

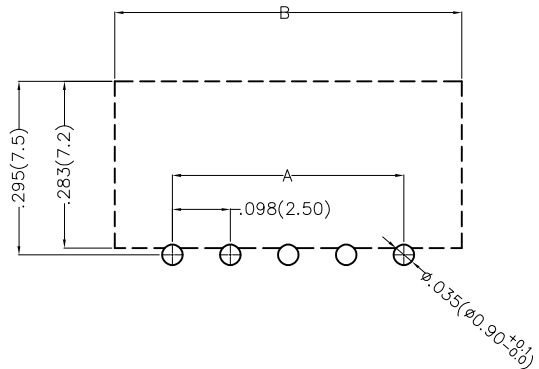
Material and Plating

Housing: PA66( UL 94V-0)  
 Contact Pin: Brass  
 Plating: Tin Plated  
 Mates With(Housing): FHG25006 Series

Ordering Information

FWF 250 13 - S XX B 2 2 W1 B  
 1 2 3 4 5 6 7 8 9 10

1	Category FWF—Wafer	2	Series Number 250—Pitch2.5mm	3	Distinction No. 13	4	Row Option S—Single Row	5	Circuits XX	6	Entry Angle B—90° Angle
7	Plating 2—Tin Plated	8	Material—Resin 2—PA66	9	Color—Resin W1—White	10	Packaging B—PE Bag				



Recommended P.C.Board Layout

<p>THIRD ANGLE PROJECTION</p>	GENERAL TOLERANCES (UNLESS SPECIFIED)		APPROVE BY FRANK	DATE 01/JUL/13	PART NO. FWF25013-SXXB22W1B	ITEM NO. FWF25013	<p>Building Technology Cornerstone</p>
	X.±.012(0.30)	X.±5'	CHECKED BY JACOB	DATE 01/JUL/13	TITLE Wire to Board (Wafer) Pitch 2.5mm 90° Angle( DIP)		
DESIGN UNITS Inch (metric)	X.XX±.008(0.20)	.X'±2'	DRAWN BY CHERRY	DATE 01/JUL/13	THIS DRAWING CONTAINS INFORMATION THAT IS PROPRIETARY TO TXGA INDUSTRIAL ELECTRONICS(S.Z)CO.,LTD AND SHOULD NOT BE USED WITHOUT WRITTEN PERMISSION		
SCALE 5:1	SIZE A4	X.XX±.006(0.15)	.XX±1'				
		X.XXX±.004(0.10)	.XXX±0.5'				

1 2 3 4 5 6 7 8

1 | 2 | 3 | 4 | 5 | 6 | 7 | 8

REV	LOCATIONS	DESCRIPTION	DATE	REVISER	APPD

A

A

B

B

C

C

D

D

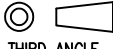

E

E

F

F

Circuits (n)	Part No.	Dimensions(in/mm)		
		A	B	C $\Delta$
2	FWF25013-S02B22W1B	.098(2.50)	.295(7.50)	.134(3.40)
3	FWF25013-S03B22W1B	.197(5.00)	.394(10.00)	.185(4.70)
4	FWF25013-S04B22W1B	.295(7.50)	.492(12.50)	.283(7.20)
5	FWF25013-S05B22W1B	.394(10.00)	.591(15.00)	.382(9.70)
6	FWF25013-S06B22W1B	.492(12.50)	.689(17.50)	.480(12.20)
7	FWF25013-S07B22W1B	.591(15.00)	.787(20.00)	.579(14.70)
8	FWF25013-S08B22W1B	.689(17.50)	.886(22.50)	.677(17.20)
9	FWF25013-S09B22W1B	.787(20.00)	.984(25.00)	.776(19.70)
10	FWF25013-S10B22W1B	.886(22.50)	1.083(27.50)	.874(22.20)
11	FWF25013-S11B22W1B	.984(25.00)	1.181(30.00)	.972(24.70)
12	FWF25013-S12B22W1B	1.083(27.50)	1.024(32.50)	1.071(27.20)
13	FWF25013-S13B22W1B	1.181(30.00)	1.378(35.00)	1.169(29.70)

 THIRD ANGLE PROJECTION	GENERAL TOLERANCES (UNLESS SPECIFIED)		APPROVE BY FRANK	DATE 01/JUL/13	PART NO. FWF25013-SXXB22W1B	ITEM NO. FWF25013	 Building Technology Cornerstone	
	X.±.012(0.30)	X'±5'	CHECKED BY JACOB	DATE 01/JUL/13	TITLE Wire to Board (Wafer) Pitch 2.5mm 90° Angle (DIP)			REV 2
	DESIGN UNITS Inch (metric)	X.XX±.008(0.20)	.X'±2'	DRAWN BY CHERRY	DATE 01/JUL/13	THIS DRAWING CONTAINS INFORMATION THAT IS PROPRIETARY TO TXGA INDUSTRIAL ELECTRONICS(S.Z)CO.,LTD AND SHOULD NOT BE USED WITHOUT WRITTEN PERMISSION		
	SCALE 5:1	SIZE A4	X.XX±.006(0.15)	.XX'±1'	X.XXX±.004(0.10)	.XXX'±0.5'		

1 | 2 | 3 | 4 | 5 | 6 | 7 | 8